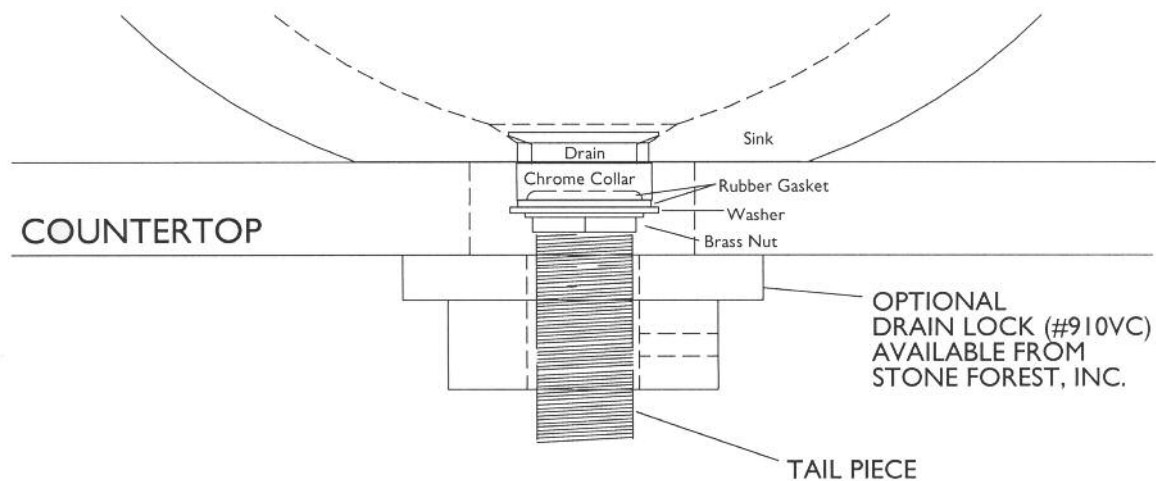


VESSEL INSTALLATION FOR THIN SINK VESSELS

We include a chrome collar that may be needed to ensure a watertight seal between the drain and the thin base of your sink. The collar is simply placed between the sink & the rubber gasket on the tailpiece (see diagram).



Required drain use 9054D Grid Drain. Drains are 1.25" NPT. This can be supplied by Stone Forest at your request in select finishes.

Do not use pop-up drains

Fasten drain to vessel per drain instructions. DAP Qwik Seal or Henkels PolySeam Seal can be used between the drain bevel and drain. Do not use plumbers putty.

A 3" hole in counter material is needed.

Secure the vessel to the countertop using a bead of silicon or construction adhesive.

An optional drain lock is available from Stone Forest. This collar can be fastened to the drain pipe and used to anchor the vessel to the counter material using the drain.