

STONE
FOREST

Elemental Facet Stand (#PFT-ST-2615 - xx) with Crossbar (CNR-FCT-2615 xx)

SIZE **A** DWG. NO. PFT-ST-CNR-2615 -Crossbar for Lumbre

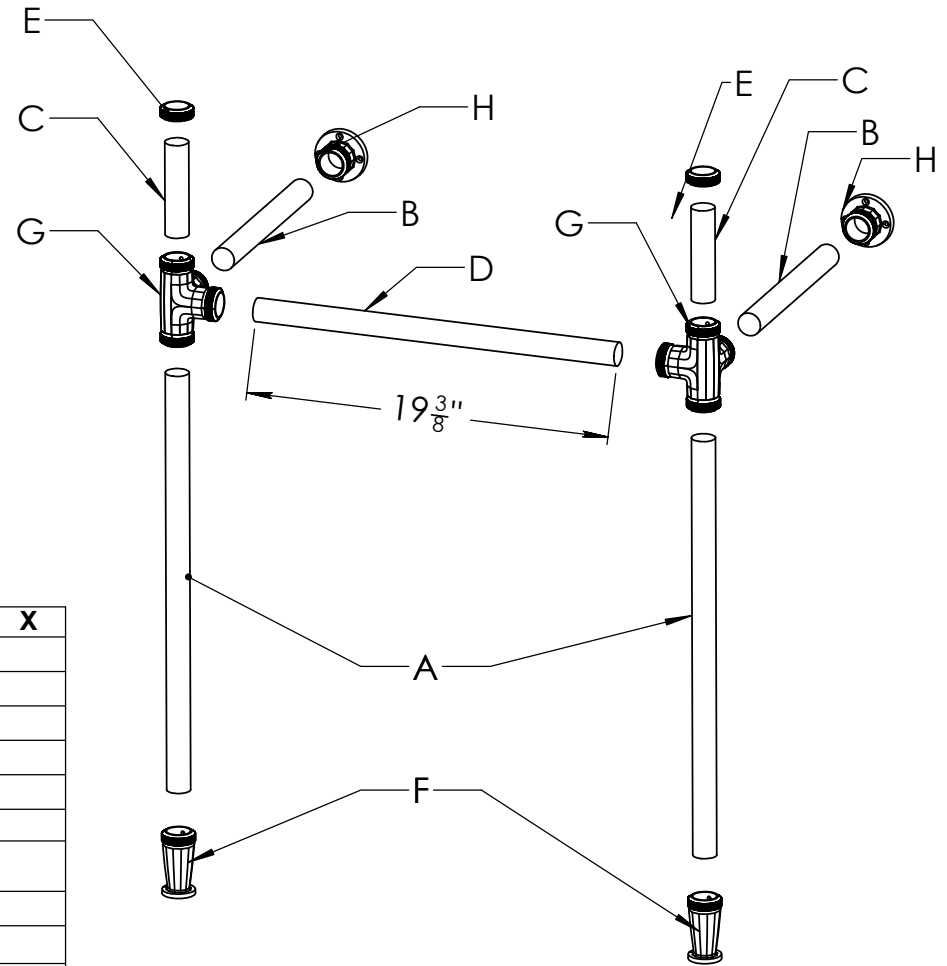
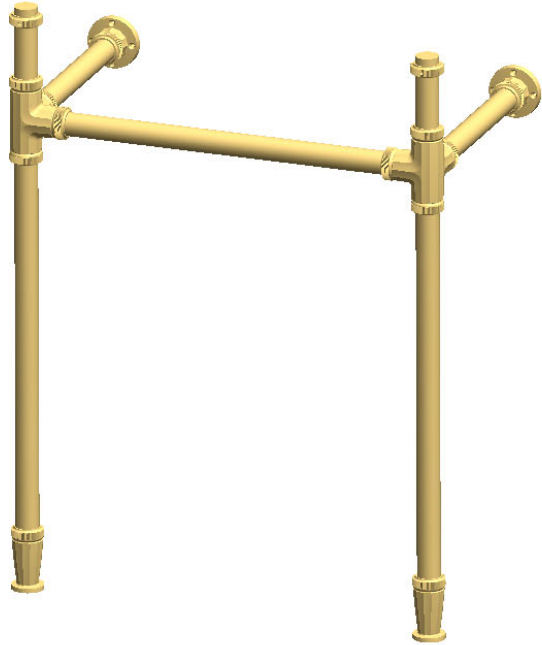
WEIGHT: SHEET 1 OF 1

©2022 Stone Forest, Inc.

Due to the hand-carving of each piece, small variances in shape and size are to be expected.

REV. **A**

DO NOT SCALE DRAWING



part	item code	description	qty	X
(A)	PFS-TB-23	23" TUBE	X2	
(B)	PFS-TB-11	11" TUBE	X2	
(C)	PFS-TB-5	5" TUBE	X2	
(D)	PFS-TB-23	23" TUBE (CUT TO 19-3/8")	X1	
(E)	PFT-FCT-CLLR	COLLAR/ SET	X1	
(F)	PFT-FCT-FOOT	FOOT/SET	X1	
(G)	PFT-FCT-CNR	CORNER 4-WAY FITTING	X2	
(H)	PFT-FCT-WALL	ESCUTCHEON	X2	
	2" #8 screws - BR, MB or PN w/wall anchors [for part (G) above]		x10	
	1"x1"x8" aluminum wall bracket with screws and anchors for attaching sink to wall - supplied when sink is ordered with stand		x2	
allen wrench (1), white gloves (1pr), extra set screws (6)				



Elemental Facet Stand (#PFT-ST-2615 - xx) with Crossbar (CNR-FCT-2615 xx)

SIZE **A** DWG. NO. PFT-ST-CNR-2615 - Facet Crossbar exp

REV. **A**

WEIGHT: SHEET 1 OF 1

©2022 Stone Forest, Inc.

Due to the hand-carving of each piece, small variances in shape and size are to be expected.

DO NOT SCALE DRAWING



fittings: FACET

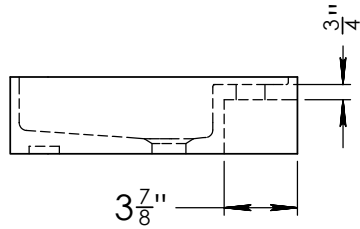
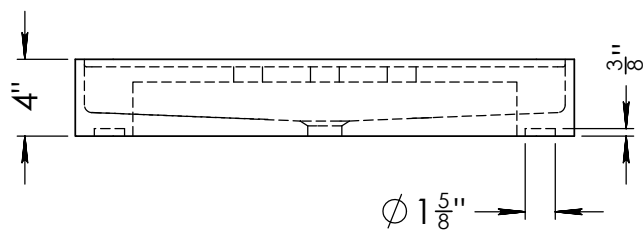
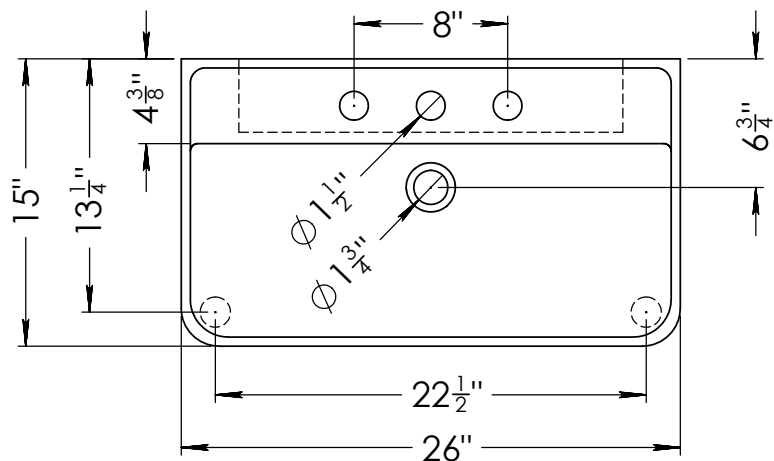
finish: _____

1. Using white gloves provided, carefully layout all fittings on a protected surface. Assembly will be required using the included allen wrench.

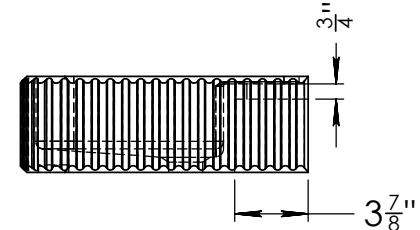
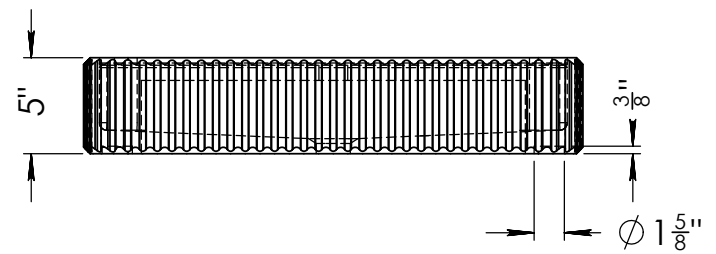
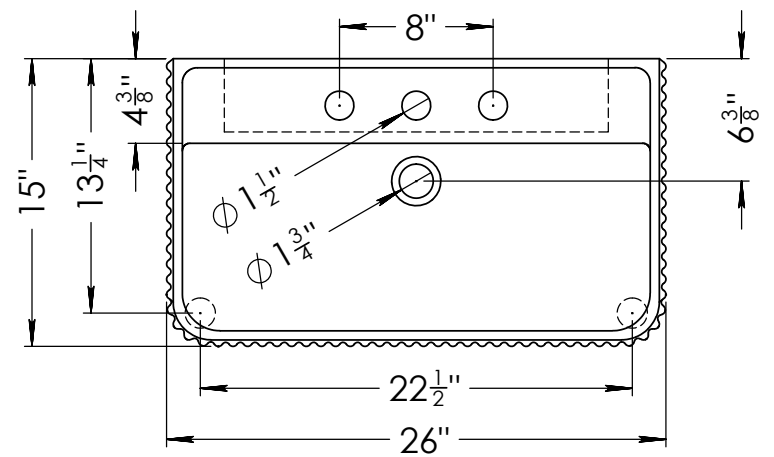
NOTE: If you are installing the legs with other components, please see the individual instructions for each component

2. Assemble the legs as shown and measure the center to center distance on the two FRONT legs. Do NOT measure across the back of the stand as small variations in fitting angles can skew those slightly out of square. This front dimension will be used to locate the center of each wall fitting to insure a square install.
3. Test fit the stand in place assuring the upright legs are plumb and the horizontal arms are level. Mark the heights of the wall fittings. You will use the width taken from the front of the legs to locate each wall fitting along with this height measurement.
4. Set the stand aside carefully and remove the wall fittings with the supplied allen wrench. Proceed to attach only the wall fittings using the measurements taken in steps 2 and 3. If drilling into wood blocking or studs, please pre-drill the holes with a 7/64" bit. This will help with the installation of the softer brass screws. If going into drywall, use the supplied anchors and pre-drill using 3/16" bit.
5. Begin setting the stand in place by inserting one horizontal arm into one of the wall fittings. The second arm may not align exactly with the other wall fitting, but can be pulled or pushed and slid in with a small bit of force. Once fully inserted into the wall fittings, tighten the set screws to lock the tubing in place.
6. Install sink top and bracket according to the sink model. The collars on the top of the stand directly under the sink do not support any weight. Please be sure these are installed before placing the sink. Once the sink is installed, these collars can be adjusted up against the sink bottom.





LUMBRE



FLUTED LUMBRE

STONE
FOREST

Lumbre TD-THN-52-26 - 26"w x 15"d x 4"h

Fluted Lumbre TD-THN52FLT - 26"w x 15"d x 5"h

SIZE **A** DWG. NO. TD-THN52-FLT and TD-THN52-26 - Lumbres

REV. **A**

WEIGHT: SHEET 1 OF 1

©2022 Stone Forest, Inc.

Due to the hand-carving of each piece, small variances in shape and size are to be expected.

DO NOT SCALE DRAWING

Adding a Ventus, Terra, Trough or Lumbre sink to an Elemental Stand. Install legs per directions and secure the support brackets to the wall following the below directions. The brass legs and support brackets support the weight of the sink. The Elemental collars sit directly under the sink, they are decorative and do not support the weight of the sink. The collars can be adjusted up against the sink bottom when you are done with the final assembly.

Proper installation of the provided 8" aluminum angle wall brackets is crucial for successful setup.

It is highly recommended to fasten the wall bracket to solid wood blocking within the wall. If solid blocking is not available, you should secure the bracket to the stud framing in the wall, or use appropriate screws and anchors suitable for your wall construction. Ensure the screws are of the right length to engage with the framing or blocking by at least 1-1/2 inches.

The brackets come with pre-drilled holes for easy fastening. However, if the pre-drilled holes do not align with the stud framing, you will need to drill additional holes in the bracket at the corresponding stud locations.

The wall brackets must be positioned carefully to ensure the sink sits level. Because there is a 3/8" recess in the bottom of the sink to accept the leg, the bracket should be approximately 3/8 inch lower than the top surface of the leg. Since sinks are handmade and not all floors and walls are perfectly plumb and level, the exact position must be leveled and measured on-site. This can be done by holding the sink in place and marking the wall accordingly.

Additionally, a generous bead of stone-safe adhesive should be applied to the top of the wall bracket and the tops of the legs to securely attach the sink top.

TILE WALL / DRYWALL APPLICATIONS

If the stud locations can be determined, drill holes in the tile at these locations and use appropriate size and length to engage with the framing at least 1-1/2".

For non-stud locations, drill holes into the tile and use the appropriate anchors for your wall construction.

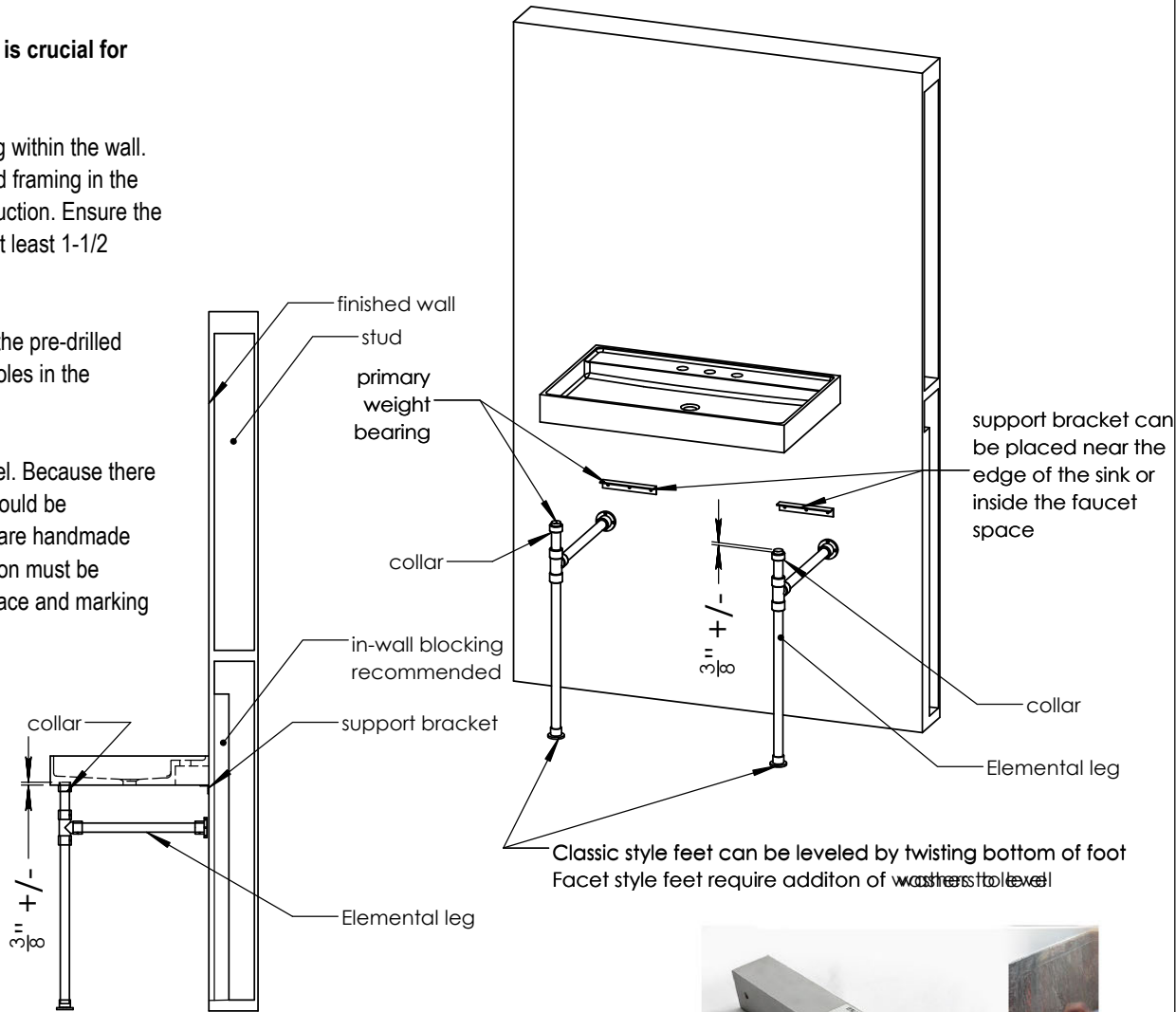


Photo of 8" aluminum bracket and screws



Installing the 8" Aluminum brackets to install Ventus, Terra, Trough or Lumbre Bath Sink.

SIZE	DWG. NO.	REV.
A	PFS-TD - Classic Vanity Legs w Ventus	A
WEIGHT:	SHEET 1 OF 1	

©2022 Stone Forest, Inc.

Due to the hand-carving of each piece, small variances in shape and size are to be expected.

DO NOT SCALE DRAWING