

STONE
FOREST

Elemental Classic Trough Stand (#PFS-TRG-3618 xx)
Metal Tray (#MTTRGTRY-3618)
with Trough Sink (#TD-TRG-36 xx)

SIZE A DWG. NO. PFS-TRG-3618-TT - Classic Tray Vanity w Trough

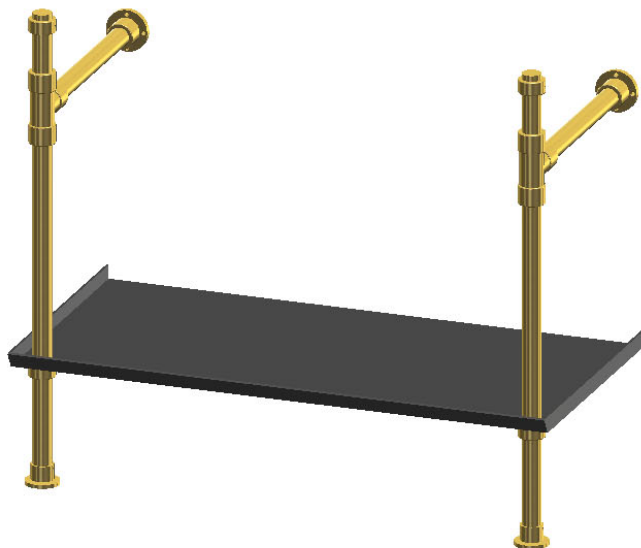
REV. A

WEIGHT: SHEET 1 OF 1

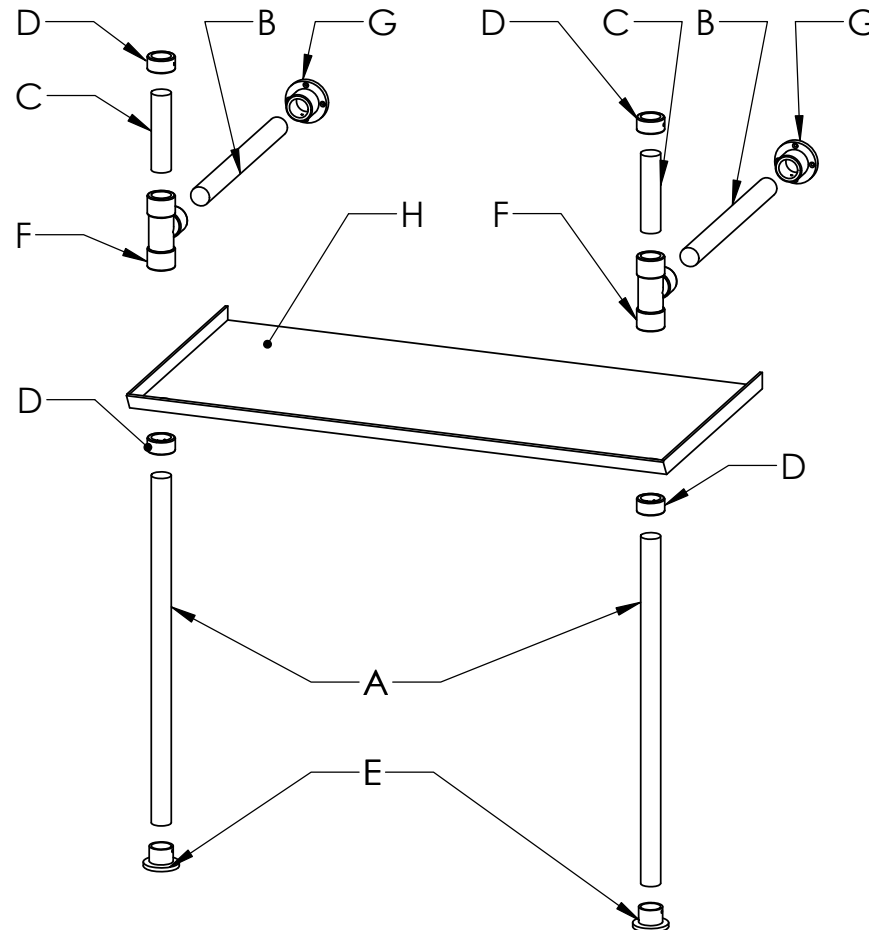
©2022 Stone Forest, Inc.

Due to the hand-carving of each piece, small variances in shape and size are to be expected.

DO NOT SCALE DRAWING



part	item code	description	qty	X
(A)	PFS-TB-23	23" TUBE	X2	
(B)	PFS-TB-14	14" TUBE	X2	
(C)	PFS-TB-5	5" TUBE	X2	
(D)	PFS-CLLR	COLLAR/SET	X2	
(E)	PFS-FOOT	FOOT/SET	X1	
(F)	PFS-TEE	TEE	X2	
(G)	PFS-WALL	ESCUTCHEON	X2	
	2" #8 screws- BR, MB or PN - w/wall anchors [for part (G) above]		x10	
(H)	PFS-MTTRGTRY-36	36" x 18" TROUGH METAL TRAY	x1	
	2" #8 screws-black- w/ wall anchors - to install metal tray (H)		x4	
	1"x1"x8" aluminum wall bracket with screws and anchors supplied to attach sink to wall when sink is purchased		x2	
allen wrench (1), white gloves (1pr), extra set screws (6), 2"x2"x8" spacers for installation (2)				



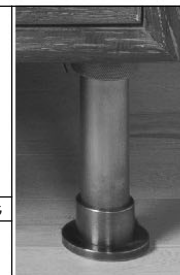
STONE
FOREST

PFS-TRG-3618-xx-TT Elemental Classic Trough Tray Vanity

DWG. NO. PFS-TRG-3618-TT - Classic Trough Tray Vanity

DO NOT SCALE DRAWING

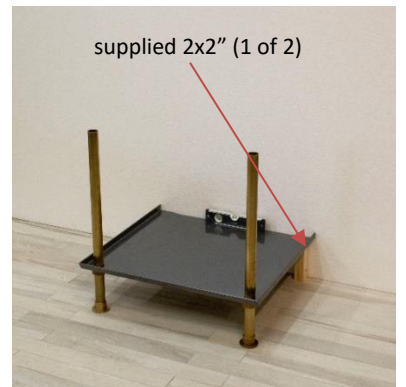
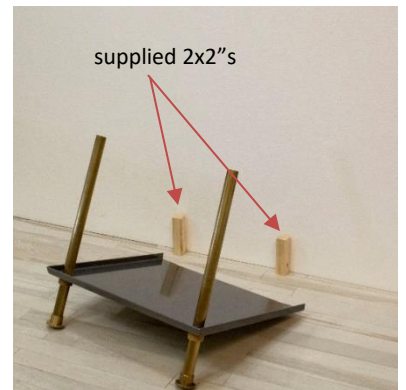
©2021 Stone Forest, Inc.



fittings: CLASSIC

stand finish _____

1. Using white gloves provided, carefully layout all brass or nickel fittings on a protected surface. Some assembly will be required using the included allen wrench.
2. Start with the front legs. The bottom collars and feet should be installed to support the shelf 8" from the floor (bottom of feet to top of collars should match the wood 2x2 spacers sent. There will be time later to fine tune and level.
3. Carefully slide the legs through the metal tray unit from the bottom. We've included 2pcs of 2x2" wood cut to 8" to help with the initial location of the tray on the wall.
4. Move the tray and legs into position. Level the back edge of the metal tray left to right. Once level, use the supplied screws (and anchors if needed) to attach the tray to the wall. Once the back is anchored to the wall, you can level the tray along the front edge, and front to back, by adjusting the collars up or down.
5. Set the return arms onto the front legs. Verify that the arms are square and level before marking and drilling holes for the brass escutcheon. If drilling into wood blocking or studs, please pre-drill the holes with a 7/64" bit. This will help with the installation of the softer brass screws. If going into drywall, use the supplied anchors and pre-drill using 3/16" bit.



1. Using white gloves provided, carefully layout all brass or nickel fittings on a protected surface. Some assembly will be required using the included allen wrench.

NOTE: If you are installing the legs with other components, please see the individual instructions for each component

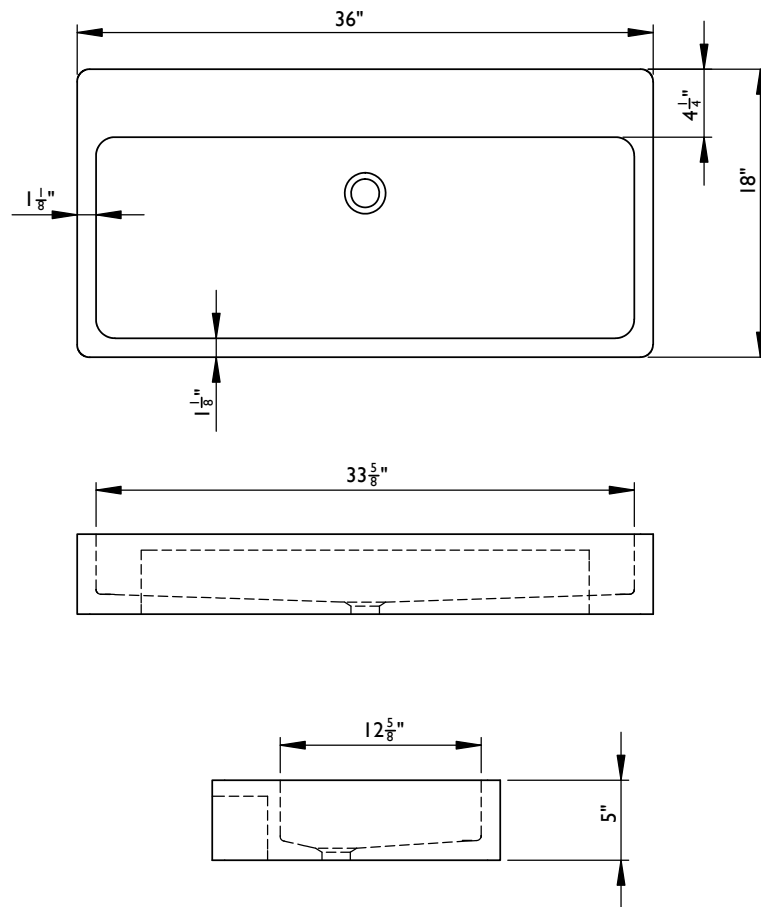


2. Assemble the legs as shown.
On the underside of the sinks there are 2-4 recessed holes to accept the top 3/8" of each leg. Measure the center to center distance on the two front holes. This will be your measurement for locating the center of each wall connection.
Set the legs up so they are plumb, level and square against the wall and attach using the supplied screws and anchors (if needed).
If drilling into wood blocking or studs, please pre-drill the holes with a 7/64" bit. This will help with the installation of the softer brass screws. If going into drywall, use the supplied anchors and pre-drill using 3/16" bit.



3. Install sink top and bracket according to the sink model.
The collars directly under the sinks do not support any weight. These can be adjusted up against the sink bottom when you are done with the final assembly.





TD-TRG-36 Trough Console

-Available in Antique Gray limestone (AGL) and Carrara Marble (CA)

-All honed

-Approximate thickness at drain is 3/4".
Required drain use 9054D Grid Drain.
This can be supplied by Stone Forest at your request in select finishes.

-Made to fit Trough Vanity #PFS-TRG-3618-xx or Trough Tray Vanity #PFS-TRG-3618-xx-TT

-Do not use pop-up drains.

-Do not use plumber's putty.

-Approx 120lbs.

Adding a Ventus, Terra, Trough or Lumbre sink to an Elemental Stand. Install legs per directions and secure the support brackets to the wall following the below directions. The brass legs and support brackets support the weight of the sink. The Elemental collars sit directly under the sink, they are decorative and do not support the weight of the sink. The collars can be adjusted up against the sink bottom when you are done with the final assembly.

Proper installation of the provided 8" aluminum angle wall brackets is crucial for successful setup.

It is highly recommended to fasten the wall bracket to solid wood blocking within the wall. If solid blocking is not available, you should secure the bracket to the stud framing in the wall, or use appropriate screws and anchors suitable for your wall construction. Ensure the screws are of the right length to engage with the framing or blocking by at least 1-1/2 inches.

The brackets come with pre-drilled holes for easy fastening. However, if the pre-drilled holes do not align with the stud framing, you will need to drill additional holes in the bracket at the corresponding stud locations.

The wall brackets must be positioned carefully to ensure the sink sits level. Because there is a 3/8" recess in the bottom of the sink to accept the leg, the bracket should be approximately 3/8 inch lower than the top surface of the leg. Since sinks are handmade and not all floors and walls are perfectly plumb and level, the exact position must be leveled and measured on-site. This can be done by holding the sink in place and marking the wall accordingly.

Additionally, a generous bead of stone-safe adhesive should be applied to the top of the wall bracket and the tops of the legs to securely attach the sink top.

TILE WALL / DRYWALL APPLICATIONS

If the stud locations can be determined, drill holes in the tile at these locations and use appropriate size and length to engage with the framing at least 1-1/2".

For non-stud locations, drill holes into the tile and use the appropriate anchors for your wall construction.

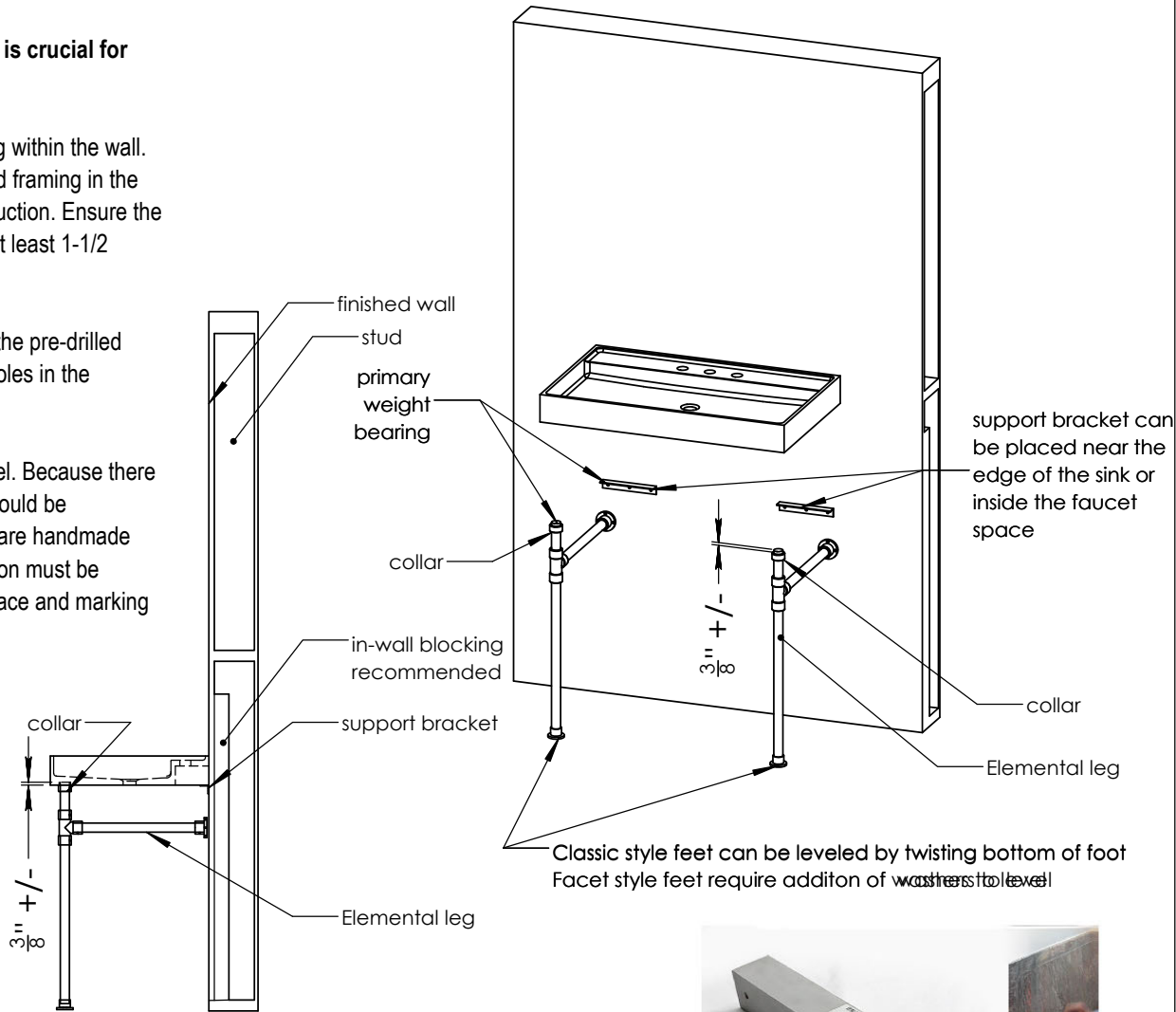


Photo of 8" aluminum bracket and screws

<div>STONE FOREST</div>			Installing the 8" Aluminum brackets to install Ventus, Terra, Trough or Lumbre Bath Sink.		<div>Due to the hand-carving of each piece, small variances in shape and size are to be expected.</div> <div>DO NOT SCALE DRAWING</div>
SIZE	DWG. NO.			REV.	
A	PFS-TD - Classic Vanity Legs w Ventus			A	
WEIGHT:		SHEET 1 OF 1			
©2022 Stone Forest, Inc.					