

Elemental Classic Stand (#PFS-TD-24 xx)
Stone Shelf (#STSLF24xx)

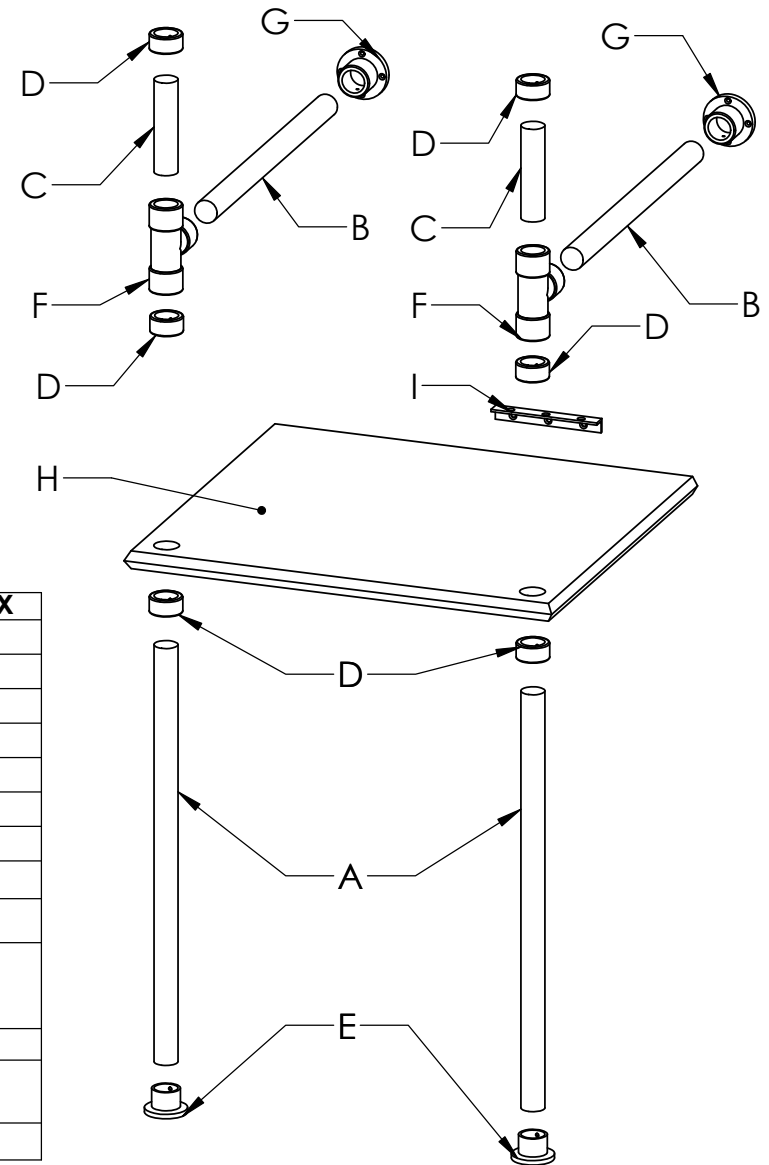
SIZE **A** DWG. NO. PFS-TD-24 - 24 Classic Shelf Vanity REV. **A**

WEIGHT: SHEET 1 OF 1

©2020 Stone Forest, Inc.

Due to the hand-carving of each piece, small variances in shape and size are to be expected.

DO NOT SCALE DRAWING



part	item code	description	qty	X
(A)	PFS-TB-23	23" TUBE	X2	
(B)	PFS-TB-18	18" TUBE	X2	
(C)	PFS-TB-5	5" TUBE	X2	
(D)	PFS-CLLR	COLLAR/ SET	X3	
(E)	PFS-FOOT	FOOT/SET	X1	
(F)	PFS-TEE	TEE	X2	
(G)	PFS-WALL	ESCUTCHEON	X2	
	2" #8 screws - BR, MB or PN - w/wall anchors [for part (G) above]		x10	
(H)	STSLF-24	24" STONE SHELF	x1	
(I)	PFS-BRKT-ALUM	1"X1"X8" ALUMINUM BRACKET [to attach stone shelf to wall for (H) above]	X1	
	2" #8 screws-black- w/ wall anchors to attach bracket to wall [for (I) above]		x4	
	1"x1"x8" aluminum wall brackets with screws and anchors for attaching sink to wall - supplied when sink is ordered with stand		x2	
allen wrench (1), white gloves (1pr), extra set screws (6), 2x2x6" spacers for installation (2)				

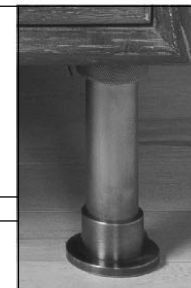


Elemental Classic Stand (#PFS-TD-24 xx) Stone Shelf (#STSLF24xx)

DWG. NO. PFS-TD-24-SS - Elemental Stone Shelf Vanity

DO NOT SCALE DRAWING

©2021 Stone Forest, Inc.



fittings: CLASSIC

stand finish _____

stone finish _____

1. Using white gloves provided, carefully layout all brass or nickel fittings on a protected surface. Some assembly will be required using the included allen wrench.
2. With help, stand the shelf up on it's back edge and carefully slide the legs through the shelf from the top about 4".
3. Slide one collar up from the bottom on each leg followed by the feet. Tighten the feet first then slide the legs through the shelf to the desired installation height measuring from the bottom of the foot to the bottom of the shelf. While one person holds the leg in place, the other can slide the collar against the bottom of the shelf and tighten. The opportunity to fine tune the height will come later.
4. Now install the aluminum bracket to support the rear of the shelf onto your wall. Top of the bracket should be level and at the height for the bottom of the shelf. This cannot be adjusted once the shelf is set up.
For the strongest installation we recommend one of the screws goes into a stud, but the anchors and supplied screws will support the shelf fully if no stud is available.
5. Move the shelf and legs into position and check that the back edge of the shelf sits flat and level on the aluminum wall bracket just installed.
At this time, you can adjust the collars supporting the front to level the shelf from front to back and side to side.
6. Once you are happy with the setup, have someone help lift the back of the shelf off the wall bracket and apply a bead of adhesive caulk to the top of the bracket. We recommend Dap Kwikseal or PL Adhesive for stone.
Set the shelf down and press into adhesive and against the wall. Allow to dry per manufacturer's instructions.
7. Slide the second set of collars onto the legs to fit on top of the shelf and tighten.

1. Slide one collar onto each leg at the desired height for your shelf.
2. Level the collars across the front.
3. With blue tape placed vertically on the back wall centered in your installation location, place a mark on it using the level from the top of either collar just installed. Double check from the other collar that this mark is level with the front collars.
4. Install the angle bracket onto the wall with the top of the bracket level with the mark placed.
5. Carefully slide the shelf down onto the front legs being careful not to twist the shelf and scratch the legs. Blue tape can be used on the tubing to help prevent scratching. Please remove immediately after installing shelf.
6. Once the shelf is resting on the collars and bracket, check for level again front to back, and side to side.
7. Any fine tuning can be done at the front collars using the provided allen wrench.
8. Once you are happy with the setup, have someone help lift the back of the shelf off the wall bracket and apply a bead of adhesive caulk to the top of the bracket. We recommend Dap Kwikseal or PL Adhesive for stone. Set the shelf down and press into adhesive and against the wall. Allow to dry per manufacturer's instructions.
9. Slide the second set of collars onto the legs to fit on top of the shelf and tighten.

1. Using white gloves provided, carefully layout all brass or nickel fittings on a protected surface. Some assembly will be required using the included allen wrench.

NOTE: If you are installing the legs with other components, please see the individual instructions for each component

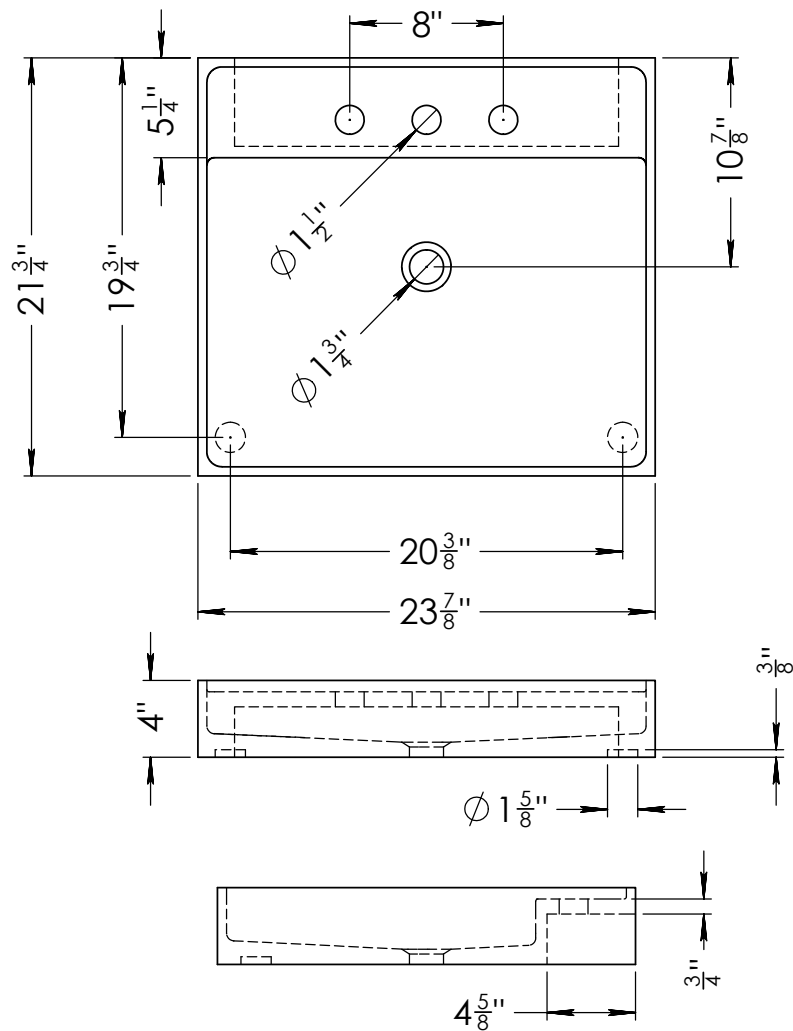


2. Assemble the legs as shown.
On the underside of the sinks there are 2-4 recessed holes to accept the top 3/8" of each leg. Measure the center to center distance on the two front holes. This will be your measurement for locating the center of each wall connection.
Set the legs up so they are plumb, level and square against the wall and attach using the supplied screws and anchors (if needed).
If drilling into wood blocking or studs, please pre-drill the holes with a 7/64" bit. This will help with the installation of the softer brass screws. If going into drywall, use the supplied anchors and pre-drill using 3/16" bit.

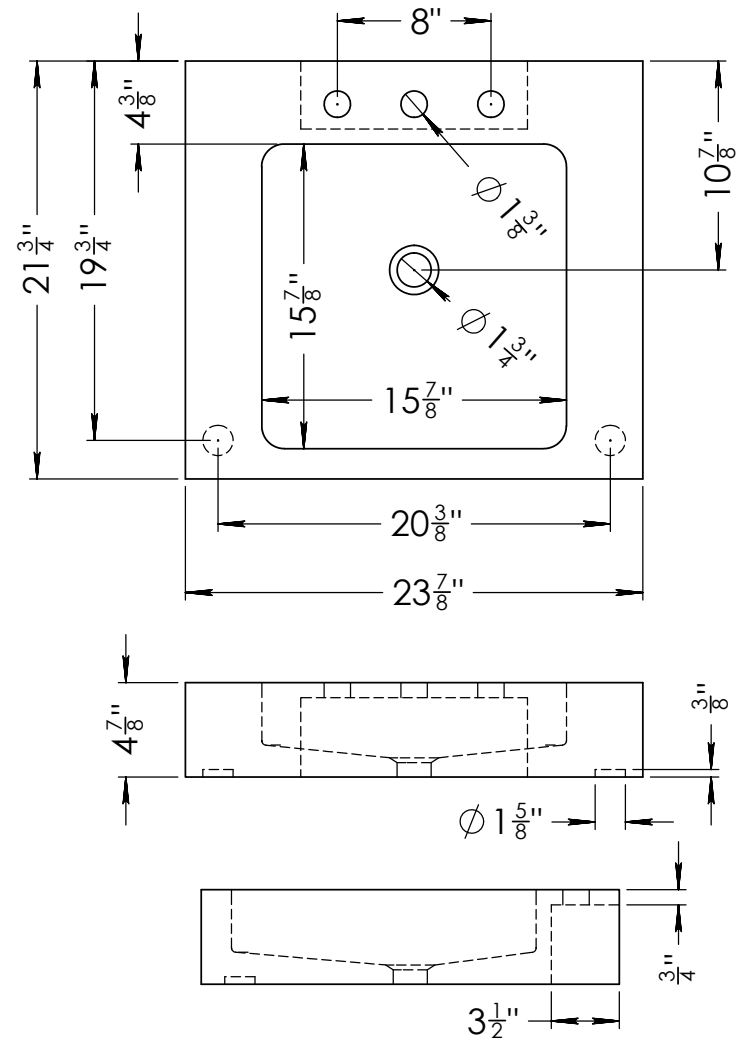


3. Install sink top and bracket according to the sink model.
The collars directly under the sinks do not support any weight. These can be adjusted up against the sink bottom when you are done with the final assembly.





VENTUS



TERRA

STONE
FOREST

Ventus Bath Sink - 24"w x 22"d x 4"h
Terra Bath Sink - 24"w x 22"d x 5"h

SIZE **A** DWG. NO. TD-TRR-24 and TD-THN-FCT-24 Terra and Ventus

REV. **A**

WEIGHT: SHEET 1 OF 1

©2022 Stone Forest, Inc.

Due to the hand-carving of each piece, small variances in shape and size are to be expected.

DO NOT SCALE DRAWING

Adding a Ventus, Terra, Trough or Lumbre sink to an Elemental Stand. Install legs per directions and secure the support brackets to the wall following the below directions. The brass legs and support brackets support the weight of the sink. The Elemental collars sit directly under the sink, they are decorative and do not support the weight of the sink. The collars can be adjusted up against the sink bottom when you are done with the final assembly.

Proper installation of the provided 8" aluminum angle wall brackets is crucial for successful setup.

It is highly recommended to fasten the wall bracket to solid wood blocking within the wall. If solid blocking is not available, you should secure the bracket to the stud framing in the wall, or use appropriate screws and anchors suitable for your wall construction. Ensure the screws are of the right length to engage with the framing or blocking by at least 1-1/2 inches.

The brackets come with pre-drilled holes for easy fastening. However, if the pre-drilled holes do not align with the stud framing, you will need to drill additional holes in the bracket at the corresponding stud locations.

The wall brackets must be positioned carefully to ensure the sink sits level. Because there is a 3/8" recess in the bottom of the sink to accept the leg, the bracket should be approximately 3/8 inch lower than the top surface of the leg. Since sinks are handmade and not all floors and walls are perfectly plumb and level, the exact position must be leveled and measured on-site. This can be done by holding the sink in place and marking the wall accordingly.

Additionally, a generous bead of stone-safe adhesive should be applied to the top of the wall bracket and the tops of the legs to securely attach the sink top.

TILE WALL / DRYWALL APPLICATIONS

If the stud locations can be determined, drill holes in the tile at these locations and use appropriate size and length to engage with the framing at least 1-1/2".

For non-stud locations, drill holes into the tile and use the appropriate anchors for your wall construction.

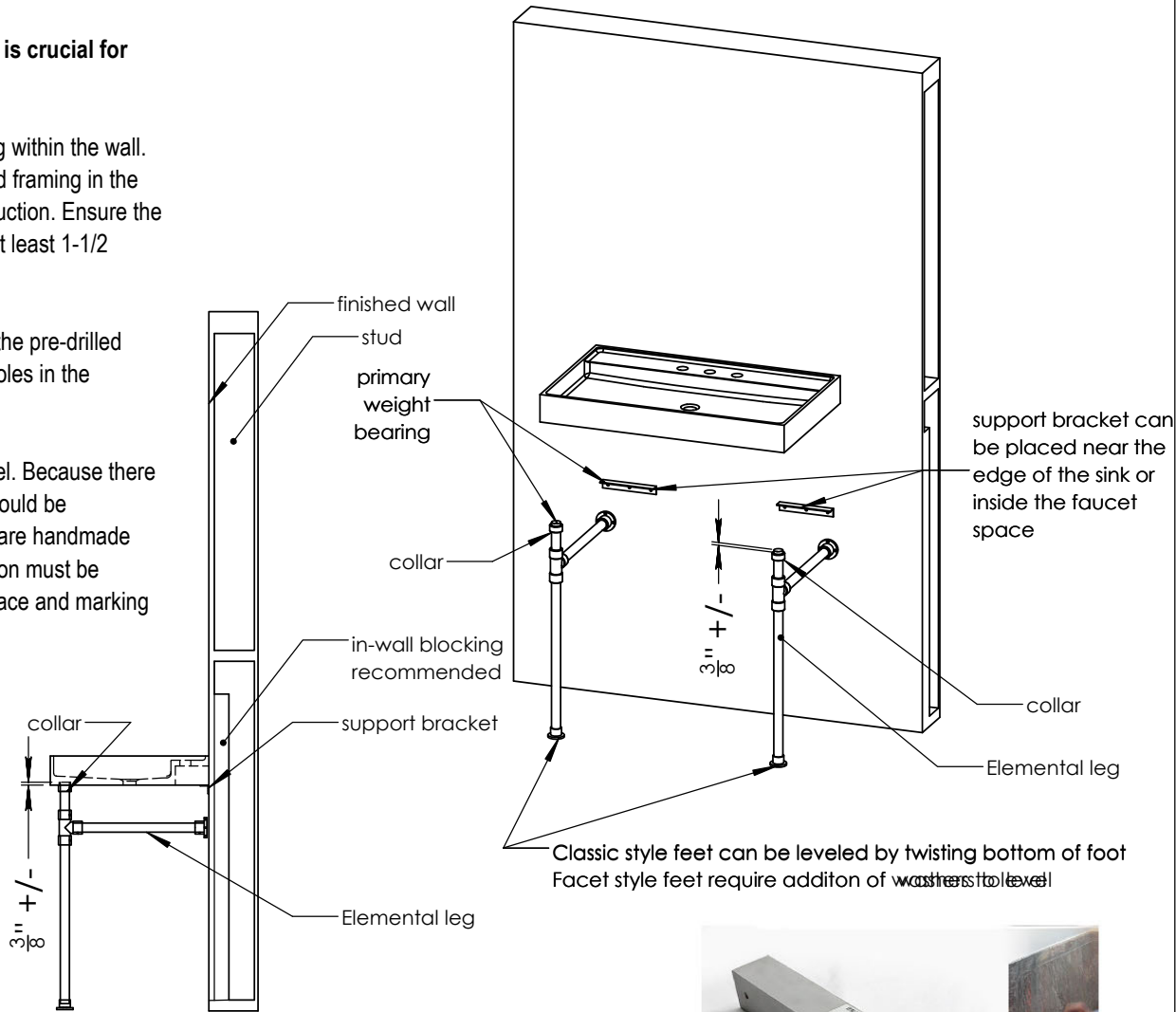


Photo of 8" aluminum bracket and screws



Installing the 8" Aluminum brackets to install Ventus, Terra, Trough or Lumbre Bath Sink.

SIZE	DWG. NO.	REV.
A	PFS-TD - Classic Vanity Legs w Ventus	A
WEIGHT:	SHEET 1 OF 1	

©2022 Stone Forest, Inc.

Due to the hand-carving of each piece, small variances in shape and size are to be expected.

DO NOT SCALE DRAWING