

part	item code	description	qty	X
(A)	PFS-TB-23	23" TUBE	X2	
(B)	PFS-TB-18	18" TUBE	X2	
(C)	PFS-TB-5	5" TUBE	X2	
(D)	PFS-CLLR	COLLAR/SET	X2	
(E)	PFS-FOOT	FOOT/SET	X1	
(F)	PFS-TEE	TEE	X2	
(G)	PFS-WALL	ESCUTCHEON	X2	
	2" #8 screws - BR, MB or PN - w/wall anchors [for part (G) above]		X10	
(H)	PFS-MTTRY-24	24" METAL TRAY	x1	
	2" #8 screws-black- w/ wall anchors - to install metal tray [part (H) above]		x4	
	1"x1"x8" aluminum wall bracket wth screws with wall anchors for attaching sink to wall - supplied when sink is ordered with stand		x2	
allen wrench (1), white gloves (1pr), extra set screws (6), 2x2x8" spacers for installation (2)				

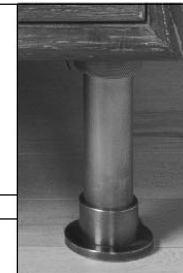
STONE
FOREST

Elemental Classic Tray Vanity PFS-TD-24-xx-MT

DWG. NO. PFS-TD-24-MT- Classic Tray Vanity 24

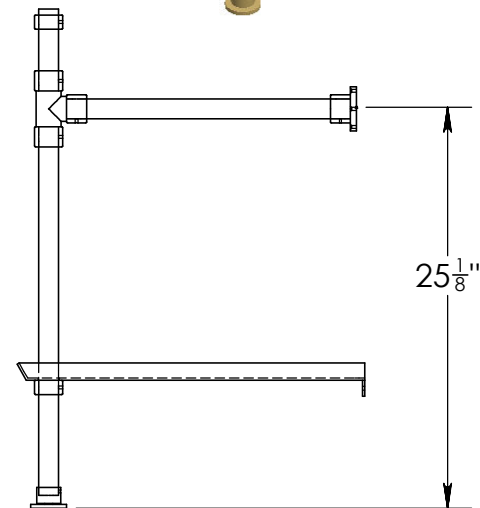
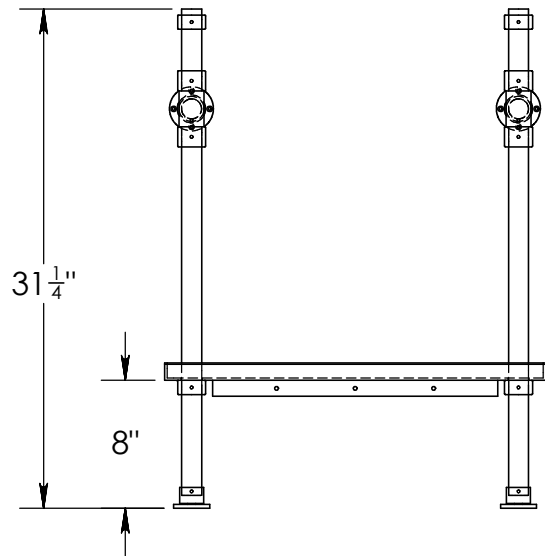
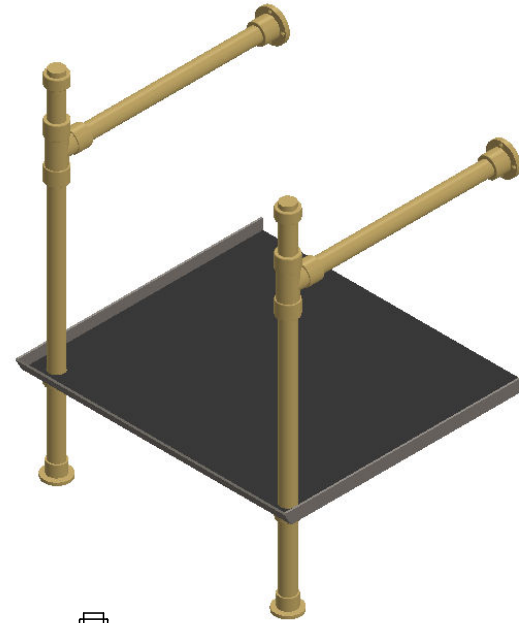
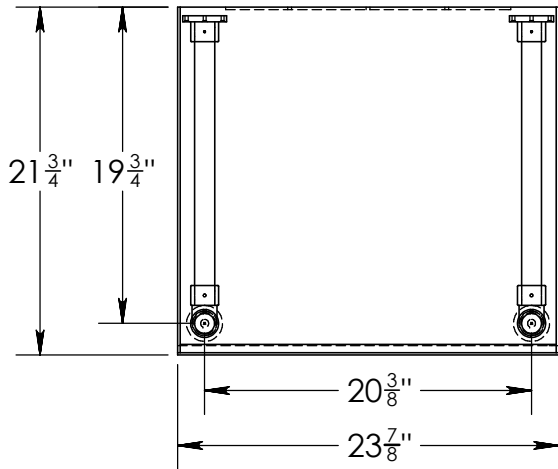
DO NOT SCALE DRAWING

©2021 Stone Forest, Inc.



fittings: CLASSIC

stand finish _____



STONE
FOREST

Elemental Tray Vanity

SIZE **A** DWG. NO. PFS-TD-24-AB-MT elemental tray vanity

REV. **A**

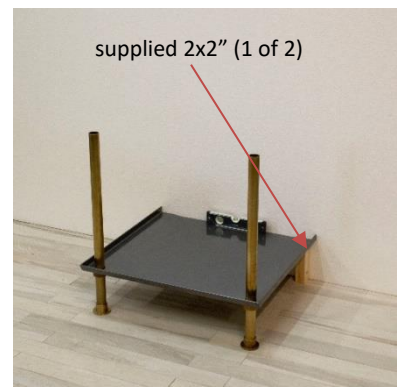
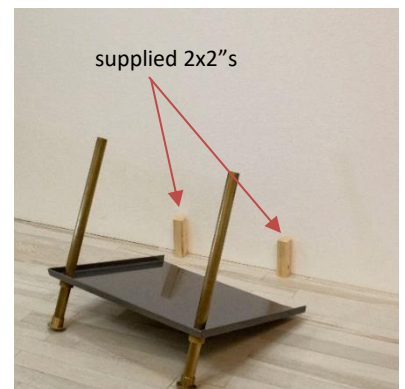
WEIGHT: SHEET 1 OF 1

©2020 Stone Forest, Inc.

Due to the hand-carving of each piece, small variances in shape and size are to be expected.

DO NOT SCALE DRAWING

1. Using white gloves provided, carefully layout all brass or nickel fittings on a protected surface. Some assembly will be required using the included allen wrench.
2. Start with the front legs. The bottom collars and feet should be installed to support the shelf 8" from the floor (bottom of feet to top of collars should match the wood 2x2 spacers sent. There will be time later to fine tune and level.
3. Carefully slide the legs through the metal tray unit from the bottom. We've included 2pcs of 2x2" wood cut to 8" to help with the initial location of the tray on the wall.
4. Move the tray and legs into position. Level the back edge of the metal tray left to right. Once level, use the supplied screws (and anchors if needed) to attach the tray to the wall. Once the back is anchored to the wall, you can level the tray along the front edge, and front to back, by adjusting the collars up or down.
5. Set the return arms onto the front legs. Verify that the arms are square and level before marking and drilling holes for the brass escutcheon. If drilling into wood blocking or studs, please pre-drill the holes with a 7/64" bit. This will help with the installation of the softer brass screws. If going into drywall, use the supplied anchors and pre-drill using 3/16" bit.



1. Using white gloves provided, carefully layout all brass or nickel fittings on a protected surface. Some assembly will be required using the included allen wrench.

NOTE: If you are installing the legs with other components, please see the individual instructions for each component



2. Assemble the legs as shown.
On the underside of the sinks there are 2-4 recessed holes to accept the top 3/8" of each leg. Measure the center to center distance on the two front holes. This will be your measurement for locating the center of each wall connection.
Set the legs up so they are plumb, level and square against the wall and attach using the supplied screws and anchors (if needed).
If drilling into wood blocking or studs, please pre-drill the holes with a 7/64" bit. This will help with the installation of the softer brass screws. If going into drywall, use the supplied anchors and pre-drill using 3/16" bit.



3. Install sink top and bracket according to the sink model.
The collars directly under the sinks do not support any weight. These can be adjusted up against the sink bottom when you are done with the final assembly.

