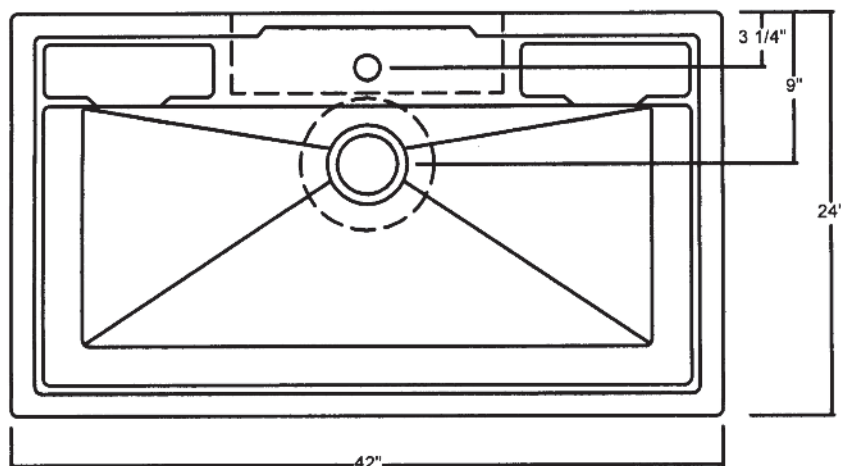


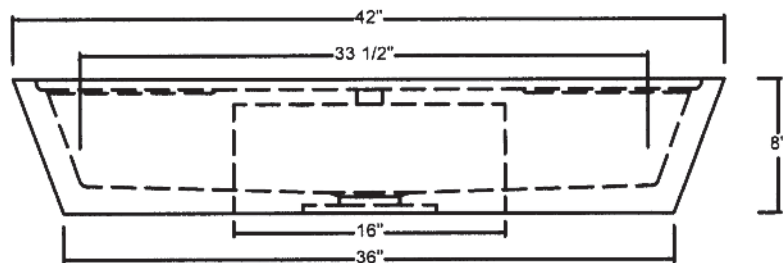
C04-OTD-42 SALUS POTTING SINK

©2011 STONE FOREST, INC.

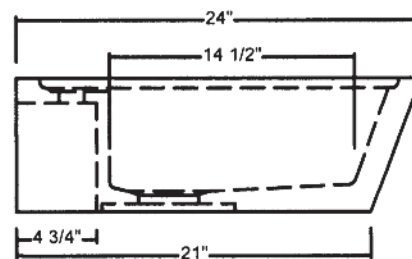


TOP VIEW

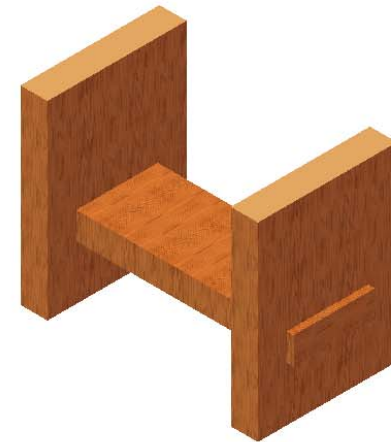
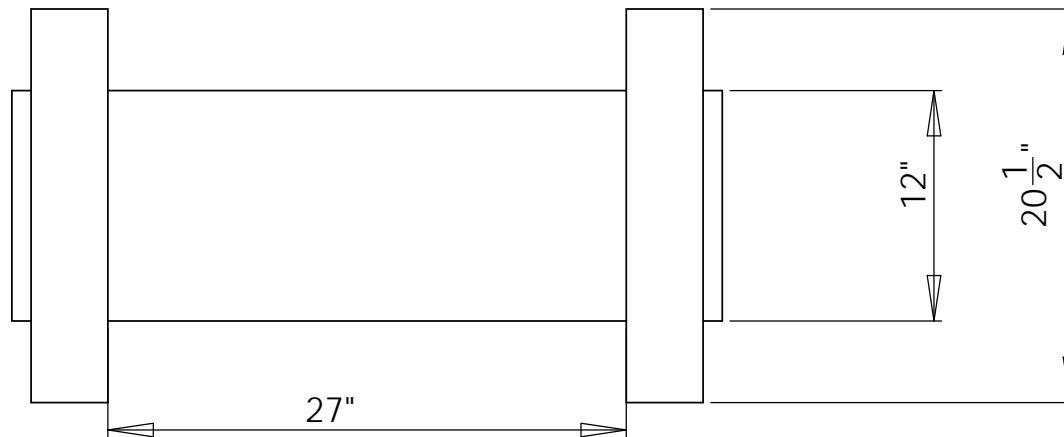
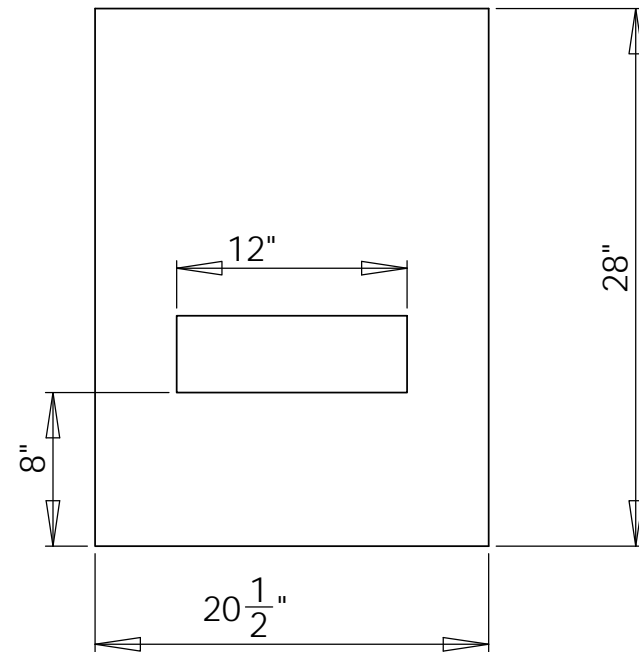
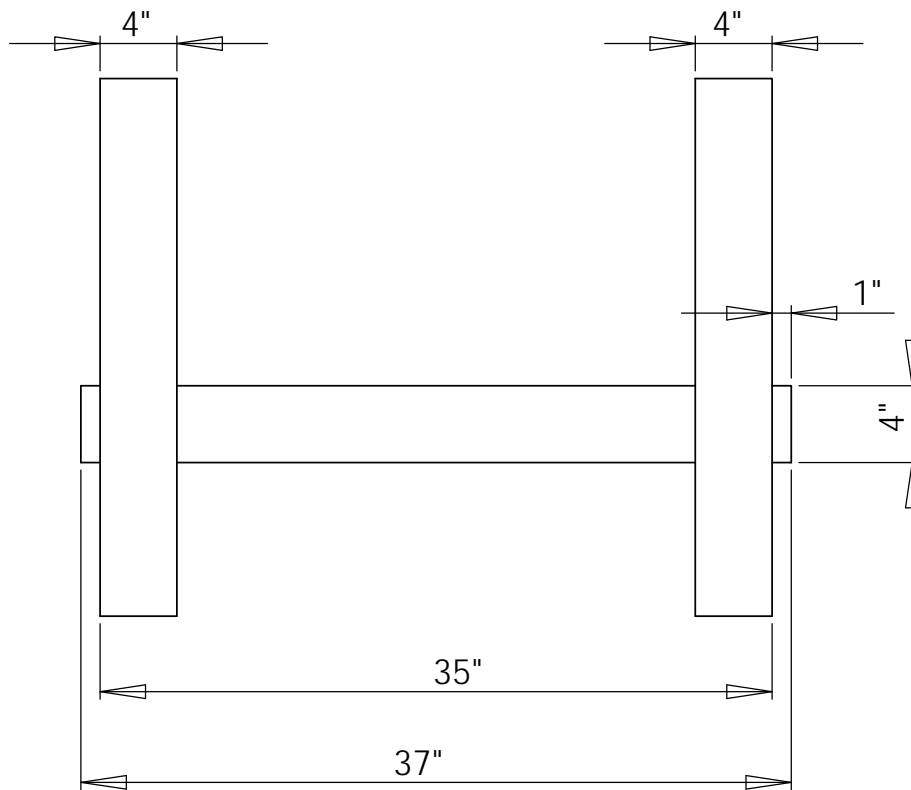
- Available in: Honed Black Granite (HONEBL)
- Angled sides for stand-alone or above counter use.
- Pre-drilled with one faucet hole. Specify if more are needed.
- Will fit most 3-1/2" drain assemblies or disposals. Thicker drain area requires an adjustable strainer like the Jaclo model #2804.
- Use stone safe plumber's putty, no oil based putty
- NOTE: Due to size variations, final cabinet and counter top construction should be done with the sink on hand.
- Approx 300lbs
- Garbage disposal not to exceed 3/4 hp and requires an extended flange.



FRONT VIEW



SIDE VIEW



PROPRIETARY AND CONFIDENTIAL

THE INFORMATION CONTAINED IN THIS DRAWING IS THE SOLE PROPERTY OF STONE FOREST, INC. ANY REPRODUCTION IN PART OR AS A WHOLE WITHOUT THE WRITTEN PERMISSION OF STONE FOREST, INC. IS PROHIBITED.

WD-OTD
Wood base for Salus

COPYRIGHT 2011 STONE FOREST, INC.