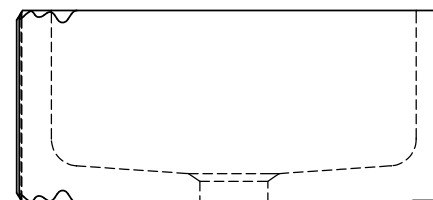


NOTE: due to size variations, final cabinet and countertop construction should be done with the sink on hand.



STONE
FOREST

Fluted Front Farmhouse Sink C04-33FLT

SIZE **A** DWG. NO. C04-33FLT fluted front

WEIGHT: SHEET 1 OF 1

©2022 Stone Forest, Inc.

Due to the hand-carving of each piece, small variances in shape and size are to be expected.

DO NOT SCALE DRAWING

Thicker drain area requires the use of an adjustable strainer like the Jaclo model #2804

Garbage disposal not to exceed 3/4 hp and may require an extended flange

Use a stone-safe plumber's putty.
DO NOT use oil-based putty

Approx 300 lbs.